



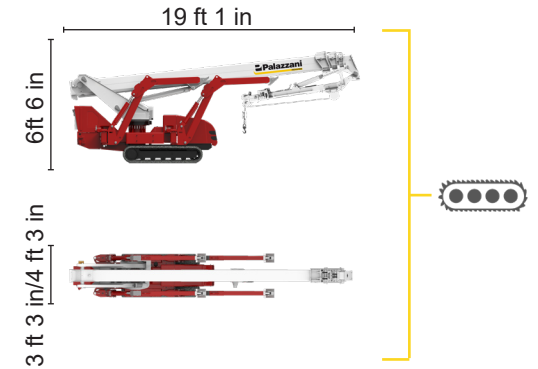
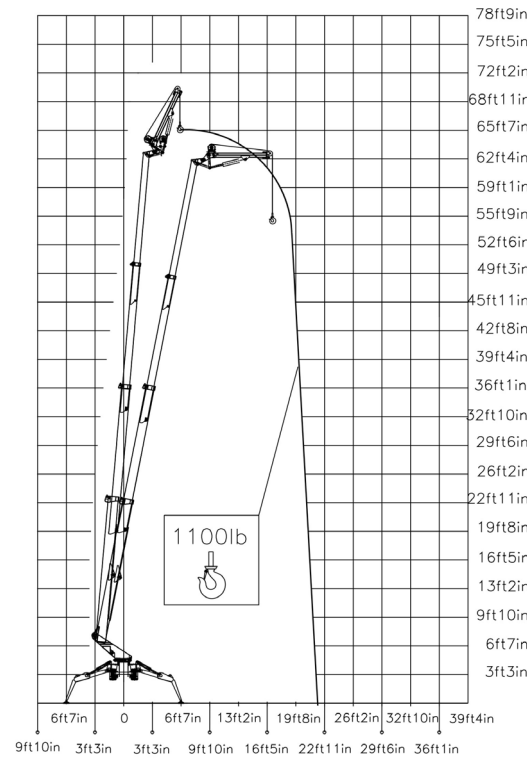
BI-ENERGY



Diesel
10,6 kW



Single-phase
Electric motor
110VAC - 2,2 kW



TSJ 75/C		70 ft 6 in	22 ft 12 in	1100 lb	660°	4 ft 11 in x 2 ft 4 in	90°+80°	9 ft x 14 ft 3 in	36%	29%	1,49 mph	7430 lb	4271 lb	33 psf	80,6 psf
----------	--	------------	-------------	---------	------	------------------------	---------	-------------------	-----	-----	----------	---------	---------	--------	----------

Available power options:

BI-ENERGY (DIESEL+AC)

ECO (AC+BATTERY)

Characteristics and technical data are informative only and subjected to change without notice.

Palazzani Industrie S.p.A.

Via del Pavione, 4 - 25050 - Paderno F.C. (BS) - Italy

Tel. (+39) 0306857073

info@palazzani.it

www.palazzani.it




QUALITY SYSTEM
CERTIFIED BY BUREAU VERITAS
= ISO 9001 =




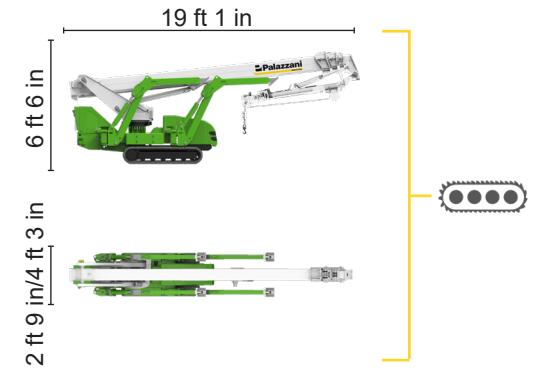
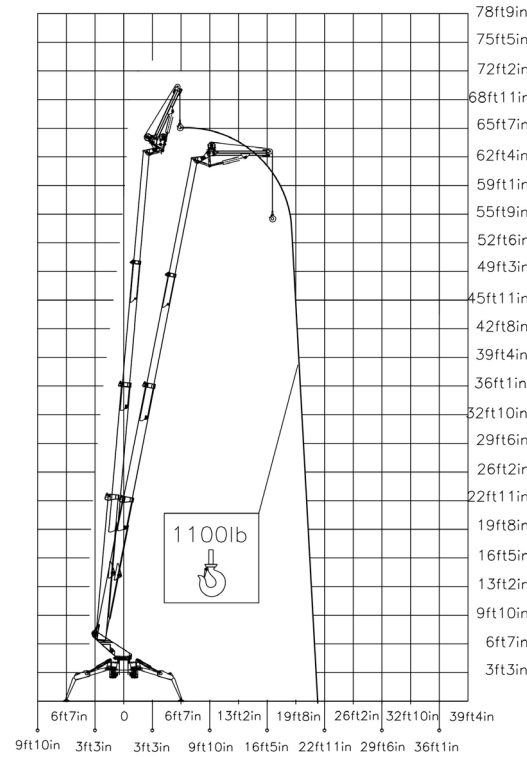
NC 804 A 22



ECO

 Single-phase
Electric motor

 Lithium iron
phosphate battery
LiFePO4
48V 360Ah



TSJ 75/C  70 ft 6 in 22 ft 12 in 1100 lb 660° 4 ft 11 in x 2 ft 4 in 90°+80° 9 ft x 14 ft 3 in 36% 29% 0,93 mph 7430 lb 4271 lb 33 psf 80,6 psf

Available power options:

BI-ENERGY (DIESEL+AC)

ECO (AC+BATTERY)

Characteristics and technical data are informative only and subjected to change without notice.

Palazzani Industrie S.p.A.

Via del Pavione, 4 - 25050 - Paderno F.C. (BS) - Italy

Tel. (+39) 0306857073

info@palazzani.it

www.palazzani.it



QUALITY SYSTEM
CERTIFIED BY BUREAU VERITAS
= ISO 9001=

NC 806 A 22