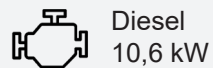




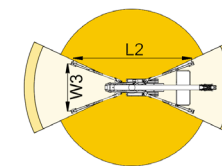
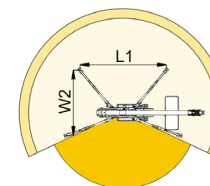
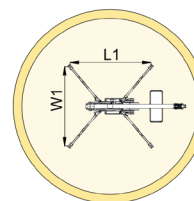
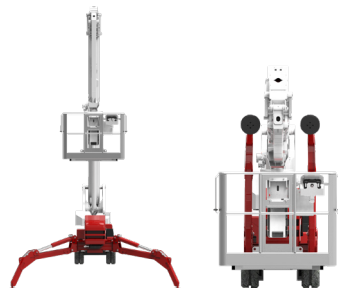
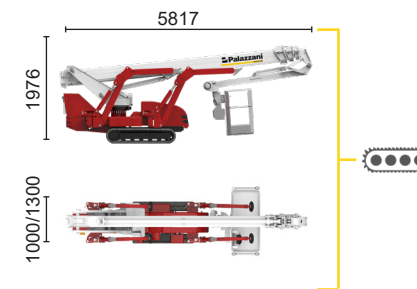
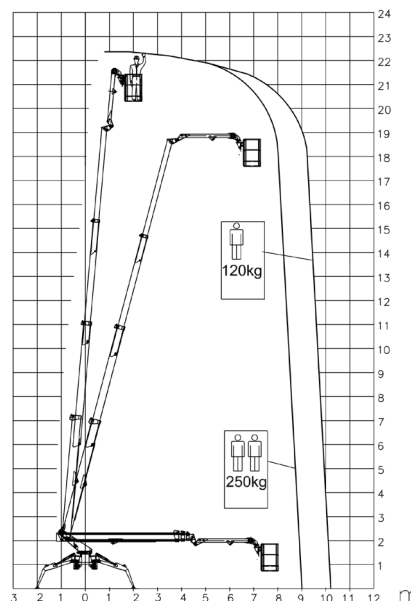
BI-ENERGY



Diesel
10,6 kW



Single-phase
Electric motor
230VAC - 2,2 kW



9 m	10,2 m	6 m	L1	L2	W1	W2	W3
250 kg	120 kg	250/120 kg	4900 mm	6250 mm	4350 mm	3350 mm	2750 mm



TSJ 23.1/C 22,3 m 10,2 m 250 kg 660° 150x70 cm 90°+80° 2,75-4,35 m 36% 29% 2,4 km/h 3370 kg 19 kN 1,58 kN/m² 3,86 kN/m²

Available power options:

BI-ENERGY (DIESEL+AC)

ECO (AC+BATTERY)

Characteristics and technical data are informative only and subjected to change without notice.

Palazzani Industrie S.p.A.

Via del Pavione, 4 - 25050 - Paderno F.C. (BS) - Italy

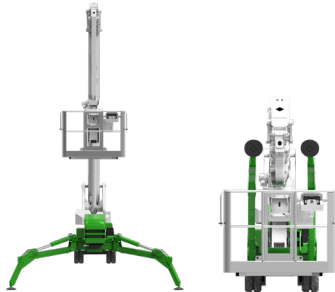
Tel. (+39) 0306857073

info@palazzani.it


www.palazzani.it




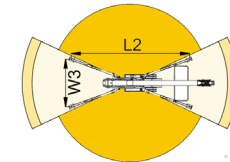
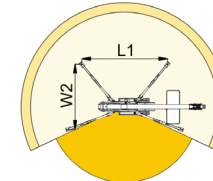
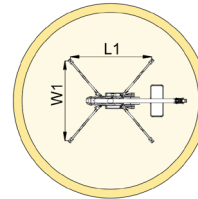
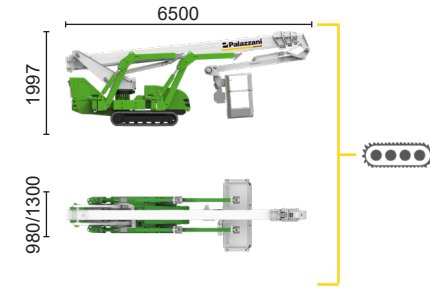
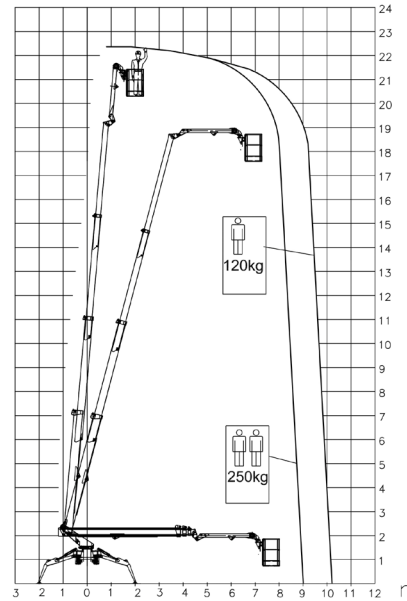
NC 803 A 22



ECO

 Single-phase
Electric motor

 Lithium iron
phosphate battery
LiFePO4
48V 360Ah




9 m	10,2 m	6 m	L1	L2	W1	W2	W3
250 kg	120 kg	250/120 kg	4900 mm	6250 mm	4350 mm	3350 mm	2750 mm



TSJ 23.1/C  22,3 m 10,2 m 250 kg 660° 150x70 cm 90°+80° 2,75-4,35 m 36% 29% 1,5 km/h 3370 kg 19 kN 1,58 kN/m2 3,86 kN/m2

Available power options:

 **BI-ENERGY** (DIESEL+AC)

 **ECO** (AC+BATTERY)

Characteristics and technical data are informative only and subjected to change without notice.

Palazzani Industrie S.p.A.

Via del Pavione, 4 - 25050 - Paderno F.C. (BS) - Italy

Tel. (+39) 0306857073

info@palazzani.it

www.palazzani.it

