



BI-ENERGY



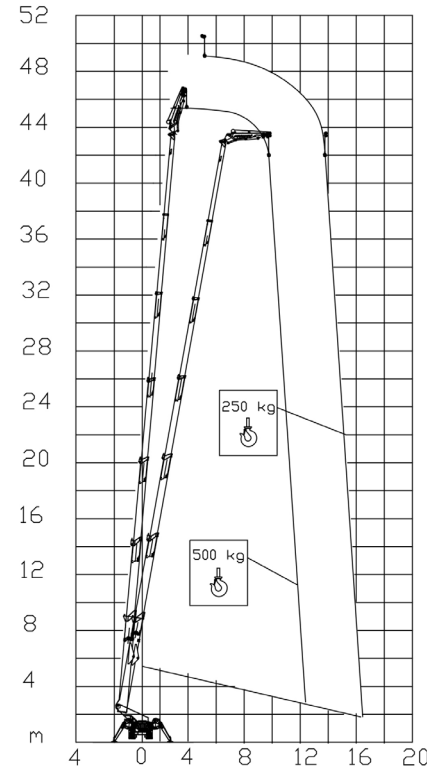
Diesel
32,5 kW



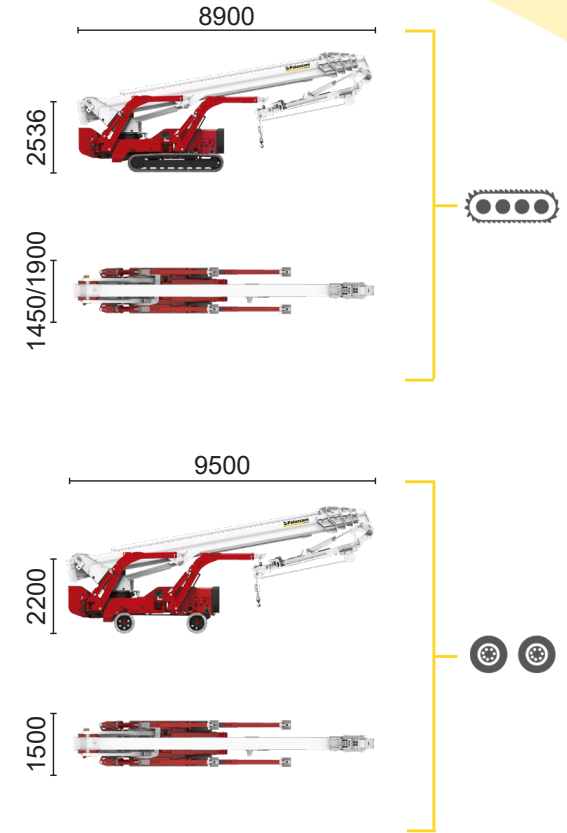
Single-phase
Electric motor
230 VAC - 2,2 kW



Three-phase
Electric motor
400 VAC - 5,5 kW



500 kg	250 kg
12,5 m	16,5 m



XTJ 52+/C	61 m	16,5 m	500 kg	660°	240x70 cm	90°+80°	4,13-5,17 m	16%	42%	2 km/h	14980 kg	95 kN	4,46 kN/m2	6,97 kN/m2
XTJ 52+/R	61 m	16,5 m	500 kg	660°	240x70 cm	90°+80°	4,13-5,17 m	16%	21%	1 km/h	15060 kg	95 kN	4,51 kN/m2	6,61 kN/m2

Available power options:
ECO (AC+BATTERY)

Palazzani Industrie S.p.A.
Via del Pavione, 4 - 25050 - Paderno F.C. (BS) - Italy
Tel. (+39) 0306857073
info@palazzani.it
www.palazzani.it

